

# SMS



## SPRINGER-MILLER SYSTEMS

### **SMS | Host Secure Data Extract for HAPI Cloud for HotelIQ**

#### **Functionality**

Acting as a protective gateway to your system, the SDE facilitates rapid, reliable and more frequent access to the data that HAPI needs in order to provide Business Intelligence services to you and your staff.

Beginning with SMS | Host version 22.1 and the release of our Personal Data Privacy Controls Package, officially sanctioned exports will be required for all vendors that utilize data from SMS | Host.

Utilizing a custom Product Profile, the SDE targets the databases they require and tracks all changes compressing, encrypting and transporting them automatically via a secure channel on a scheduled basis.

#### **Secure Data Extract Benefits**

By employing Springer-Miller's SDE for HAPI, properties gain the following benefits:

- **Security:** increased through elimination of direct/uncontrolled external access to SMS | Host
- **Protection:** sensitive data are removed prior to export; encryption in transmission complies with data privacy requirements
- **Reliability:** consistent and dependable delivery of data
- **Automation:** fully autonomous processing
- **Speed:** much smaller data feeds result in much shorter transmission periods
- **Frequency:** smaller extracts enable greater frequency of exports
- **Economy:** the SDE supports multiple vendor exports from a single installation
- **Performance Safeguard:** reliance on an official export protects against unintended performance degradation

#### **Software and Hardware Requirements**

The product is compatible with, and requires, the following:

- SMS | Host version 22.5 and higher
- Multi-Interface Processor (see Exhibit A, Rev. 5.0, Section 3, page 8 for details)

# SMS

## SPRINGER-MILLER SYSTEMS SDE Export with HAPI Cloud for HotellIQ

### About HAPI Cloud

HAPI is a middleware platform with simple-to-connect APIs that allow for connection to a multitude of different service solutions. This SDE Export is in support of HotellIQ, a Business Intelligence product offering analytics, forecasting and data management.

### HAPI Cloud Features

An SDE Export with HAPI offers properties the following:

- **Hospitality Data:** Hapi puts hospitality data on an open, secure, distributed and highly scalable data integration and streaming platform
- **Data Governance:** Build for GDPR compliance, security and privacy controls are incorporated into the platform by design, with a focus on data security, privacy and protection of personally identifiable information
- **Lower Cost:** Significantly lowers cost compared to point to point integrations
- **Open Architecture:** Resilient, secure & scalable architecture built on Apache Kafka
- **SMS Data:** Hapi is certified to receive the following from SMS – Guests, Reservations, Rates, Financial Transactions, Groups, Inventory, City Ledgers, Out-of-Order records

### Databases in Product Profile

The following <sup>SMS</sup> | Host information is incorporated in the Product Profile for HAPI Cloud:

- Guest Contact and Profile Details
- Active and Historical Reservation and Transaction Details
- Group Details and Availability
- Room Types and Room Details
- General Availability
- Rates and Packages
- Active and Historical Change Logs
- 3<sup>rd</sup> Party Confirmation Numbers
- 1, 2 and 3-Character Codes
- Travel Agency Listings
- System User IDs

[www.springermiller.com](http://www.springermiller.com)

World Headquarters  
P +1.802.253.7377  
info@springermiller.com

Las Vegas Operations Center  
+1.702.896.8200

European Headquarters  
P +44(0)20 8538 9098

Asia Headquarters  
P +60 (3) 7956 9912

# SMIS

## SPRINGER-MILLER SYSTEMS SDE Export for HAPI Cloud

### For More Information

To learn more about **Springer-Miller Systems** and integrations with our <sup>SMIS</sup> | Host Hospitality Management System, please visit our web site at [www.springermiller.com](http://www.springermiller.com) or call (802) 253-7377.

To learn more about **HAPI Cloud** and their Revenue Analysis capabilities, visit <http://hapicloud.io/> or call (407) 502-6504.

### Booking and Occupancy Analysis



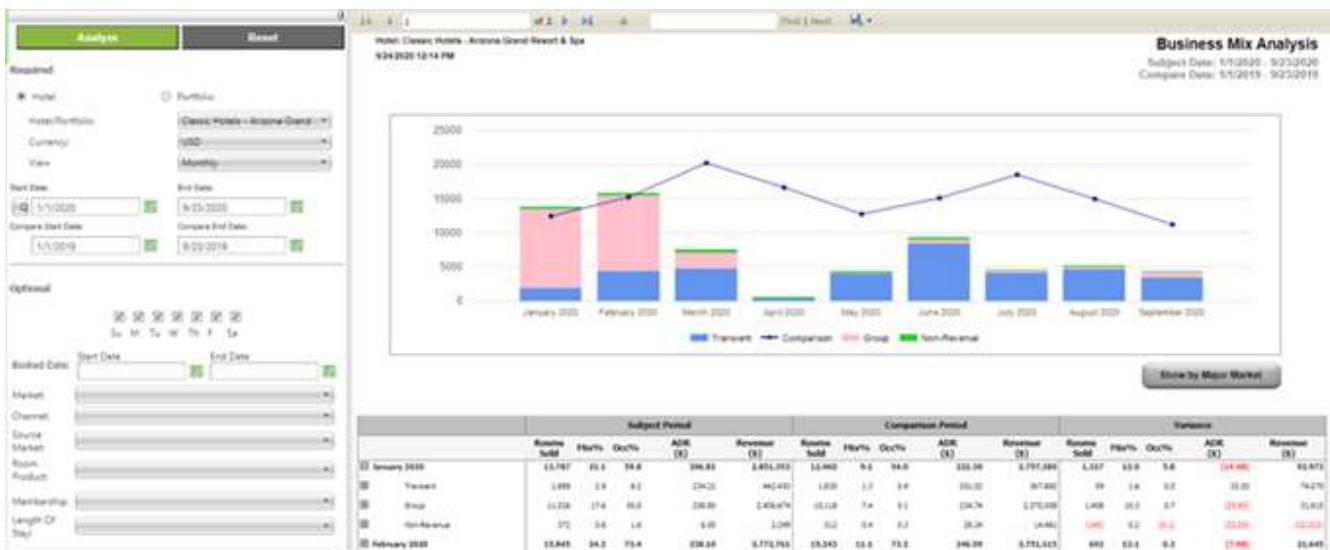
# SMIS

## SPRINGER-MILLER SYSTEMS SDE Export for HAPI Cloud

### Budget and Forecast Performance



### Business Mix Analysis



# SMIS

## SPRINGER-MILLER SYSTEMS SDE Export for HAPI Cloud

### Length of Stay Analysis

